



By Russ Pankonin

The Imperial Republican

The Chase County Longhorns fell three games below .500 last week, losing a close game to Wray, Colo., 39-47, and again to North Platte St. Pat's 30-48.

The combined record of the two opponents after last week's games stood at 30-5, indicating the kind of competition the Longhorns were facing.

Coach Carl Zuege said the Longhorns played especially well against Wray Thursday, holding them to just 47 points.

The difference proved to be a scoring drought in the fourth quarter, he said. "That's what got us."

He added some calls didn't go their way late in the game when they needed them.

The Longhorns couldn't carry the same intensity they had against Wray into their regular season face-off with St. Pat's here Friday night.

"We just couldn't get the ball to fall," Zuege said.

In the second, the Longhorns could only score two points on a pair of free throws by Charlie Haarberg.

After halftime, it didn't get much better for the 'Horns, getting just four buckets, including three from Tanner Stromberger.

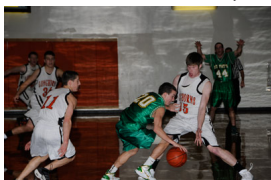
Zuege said his team must be ready to play every night with the same intensity they showed against Wray.

He said they target a shooting percentage of 45 percent inside the three-point arc, 33 percent outside the arc and 70 percent at the line.

Against St. Pat's, they shot just 21 percent, 10-48, from two-point range, 1-11 from the trey line for 9 percent and 50 percent from the line, 7-14.

Against Wray, the Longhorns went 2-11 for 18 percent outside the arc, 13-45 inside the arc for 29 percent and 7-9 at the line for 78 percent.

Wray's shooting numbers were similar, due to the Longhorns' defense, but their big advantage came at the line, shooting 34 free throws, making 16.



Wray Eagles

Zuege said his team's defensive effort really shined at Wray. Despite three 6-5 players, the Longhorns stayed right with them.

They trailed by just three after the first quarter, 13-16, lead by Charlie Haarberg with three buckets.

The Longhorns grabbed a 21-19 lead in the second before going into half down three, 23-26, as Haarberg added two more baskets in the second.

Longhorns drop games to Wray, St. Pat's

Both teams put up just seven point in the third to keep the Longhorns back by three, 33-30. The Longhorns continued to struggle offensively in the fourth, getting just nine points. Free throws made the difference in the final quarter with Chase County shooting just three, making two. At the other end, Wray shot 21 of their 34 in the final quarter. Ten of their 14 points in the quarter came at the line.

Haarberg led the scoring as the team's only double-figure scorer with 11.

Imperial 39

	2 PT.	3 PT.	FT/					
FG	FG	FTA	F	TP				
Travis Wheeler	0	0	0-0	0	0			
Kyle Bottom	0	0	0-0	5	0			
Jakob Burke	0	0	2-2	3	2			
Shane German	0	0	0-0	1	0			
Alex Strand	4	0	0-1	5	8			
Steven Fish	0	0	0-0	0	0			
Adam Moline	0	0	0-0	0	0			
Kale Gockley	0	0	0-0	0	0			
Hunter Spady	0	0	0-0	0	0			
Charlie Haarberg	4	1	0-0	3	11			
Daniel Regier	1	1	3-4	4	8			
Adam Dickey	1	0	2-2	2	4			
Grant Lenners	0	0	0-0	0	0			
Tanner Stromberger	3	0	0-0	4	6			
TOTALS	13	2	7-9	27	39			

Wray, Colo. 47

Cure 13, Jones 9, Reinick 5, Vlasin 2, Kettelson 2, Fruhwirth 12, Holmes 4.

Wray's totals: 2 pt. FG—13; 3 pt. FG—1; FT/FTA—16-34; Fouls—12; TP—47.

Points by quarters:

Imperial 13□□10□7 □9—39

Wray 16□□10□7□14—47

St. Pat's Irish

The Longhorns struggled offensively most of the night, trailing 0-7 before Kyle Bottom knocked down a trey.

Still, they managed to stay within three of St. Pat's at the first quarter break, 10-13, on five points from Bottom.

In the second, Haarberg put the only points on the board for the Longhorns with a pair of free throws. By half, St. Pat's had built its lead to nine, 12-21.

Stromberger scored six of the Longhorns' eight points in third.

The Irish began capitalizing inside and widened their lead with a 17-point effort, 38-20.

The Longhorns could only match St. Pat's 10 in the fourth quarter, falling 30-48.

Stromberger led the scoring with eight, while picking up eight rebounds. Alex Strand led the team with nine rebounds.

Imperial 30

	2 PT.	3 PT.	FT/					
FG	FG	FTA	F	TP				
Travis Wheeler	0	0	0-0	0	0			

Longhorns drop games to Wray, St. Pat's

Kyle Bottom	2	1	0-4	3	7
Jakob Burke	0	0	0-0	0	0
Shane German	2	0	2-2	1	6
Alex Strand	1	0	0-0	4	2
Steven Fish	0	0	1-2	0	1
Adam Moline	0	0	0-0	0	0
Kale Gockley	0	0	0-0	0	0
Hunter Spady	0	0	0-0	0	0
Charlie Haarberg	0	0	2-2	2	2
Daniel Regier	1	0	2-4	1	4
Adam Dickey	0	0	0-0	1	0
Grant Lenner	0	0	0-0	0	0
Tanner Stromberger	4	0	0-0	1	8
TOTALS	10	1	7-14	13	30

N.P. St. Pat's 48

O'Malley 2, M. Clinch 10, J. Clinch 19, Vinton 17.

N.P. St. Pat's totals: 2 pt. FG—19; 3 pt. FG—0; FT/FTA—10-13; Fouls—9; TP—48.

Points by quarters:

Imperial 10 □ □ 2 □ 8 □ 10—30

N.P. St. Pat's 13 □ □ 8 □ 17 □ 10—48

Three games this week

The Longhorns will see action three nights this week.

Tuesday night they traveled to Wauneta-Palisade, losing another heartbreaker, 52-59.

Friday, it's parent's night as the Longhorns play host to Bayard. Those activities for the boys will be held before the varsity boys' game. Jayvee action begins at 4 p.m.

On Saturday, the Longhorns travel to Hershey with jayvee action beginning at 3:30 p.m. MT.